

Széchenyi István University



Location: Győr

half way between Vienna and Budapest

Regional center



History:

- 1968: foundation as the Polytechnic of Transportation and Telecommunication
- 1974: opening ceremony
- 1986: Széchenyi István College
- 1st January, 2002: University status

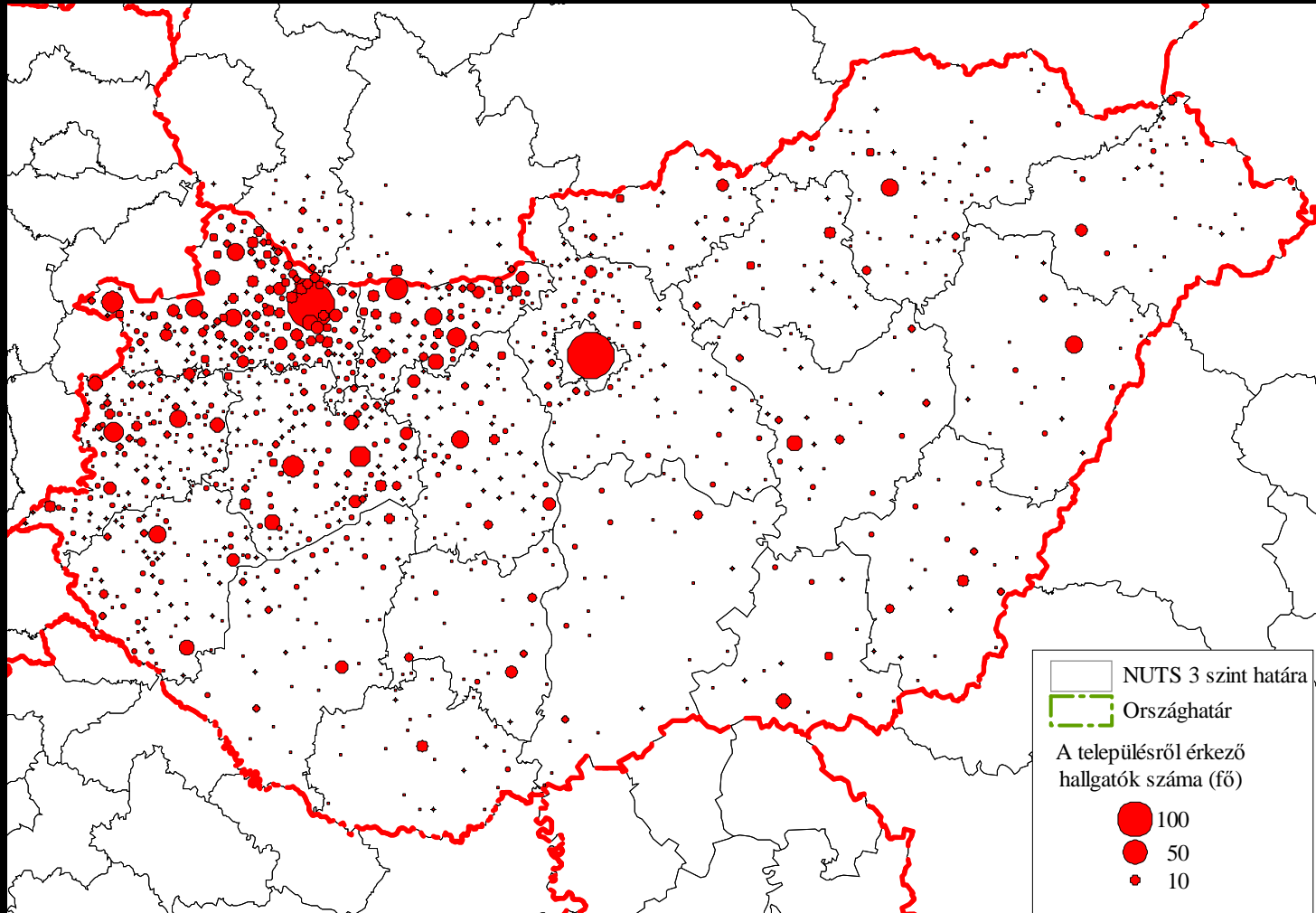


- provides initial training leading to a BSc and MSc and PhD degree in various fields
- offers post-graduate courses, carries out research, consultancy and other professional activities
- 2 one-cycle study programmes: **Architect and Design Engineering**, Law studies
- 21 BSc / MSc study programmes



Regionality

Residency of students in 2005



Available courses in 2007 1.

BA Business and management

BA International administration
management

BA International studies

BA Public administration
management

BA Social work

BA Trade and marketing

BSc Architectural engineering

BSc Music teacher

BSc Civil engineering

BSc Nursing and medical care

BSc Electrical engineering

BSc Transportation engineering

BSc Environmental engineering

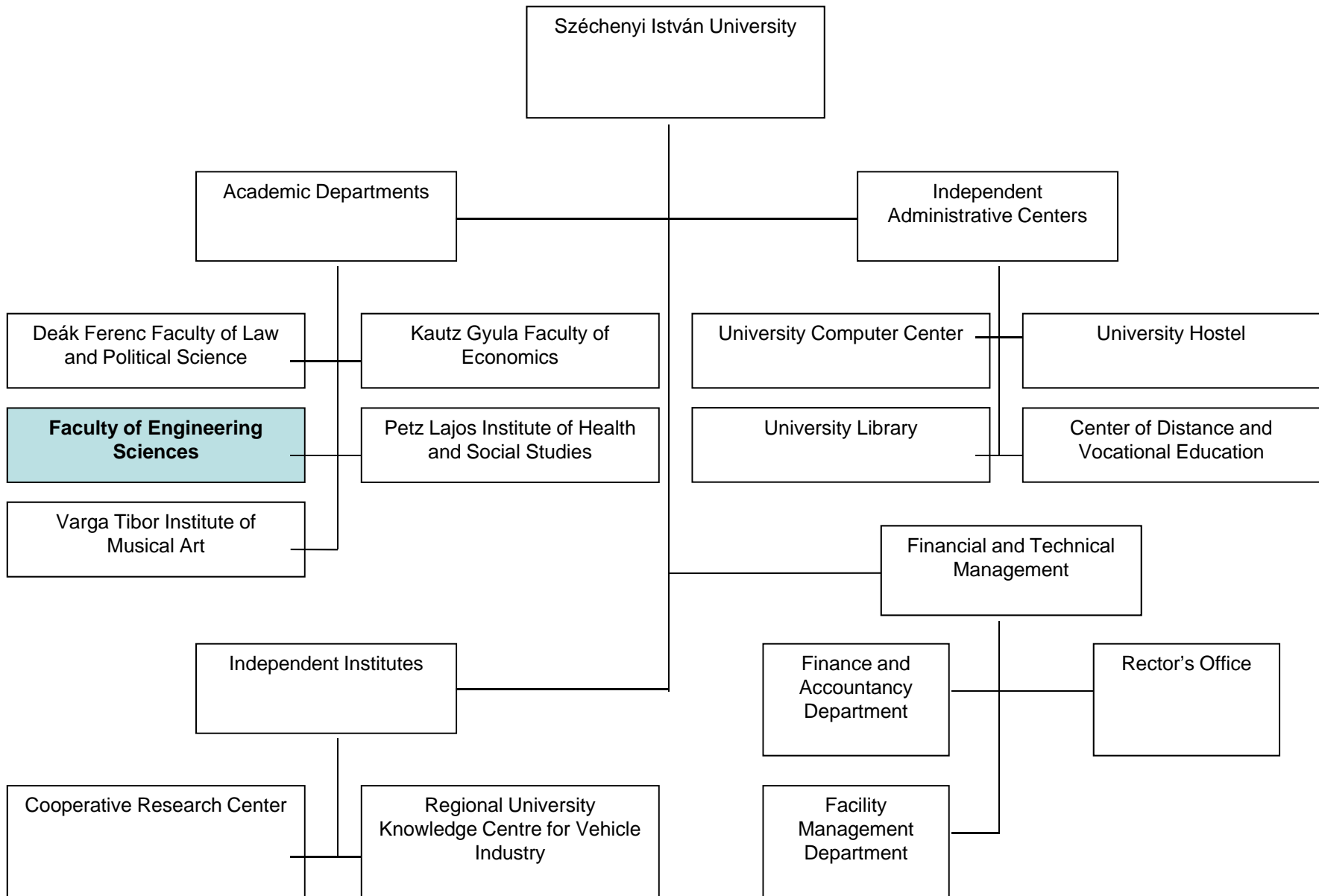
BSc Vocational technical
instructor

BSc Engineering management

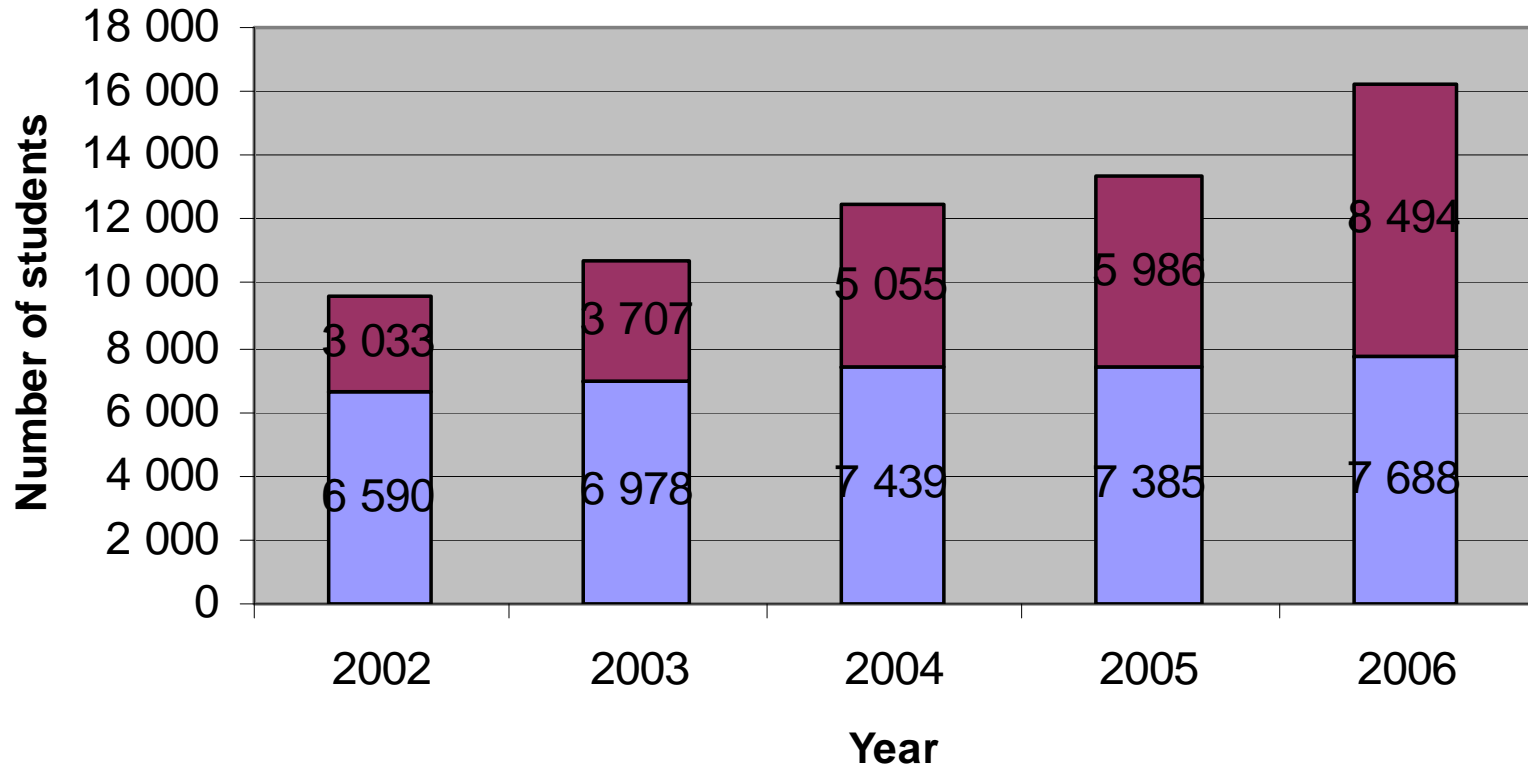
Available courses in 2007 2.

BSc Health management
BSc Informatics of economics
BSc Information technology
BSc Mechanical engineering
BSc Mechatronics engineering
BSc Municipal engineering
MA Business and management

MSc Architectural engineering
MSc Civil engineering
MSc Informatics of economics
MSc Law
MSc Municipal engineering
PhD Business and management
PhD Civil engineering
PhD Law
PhD Transportation engineering

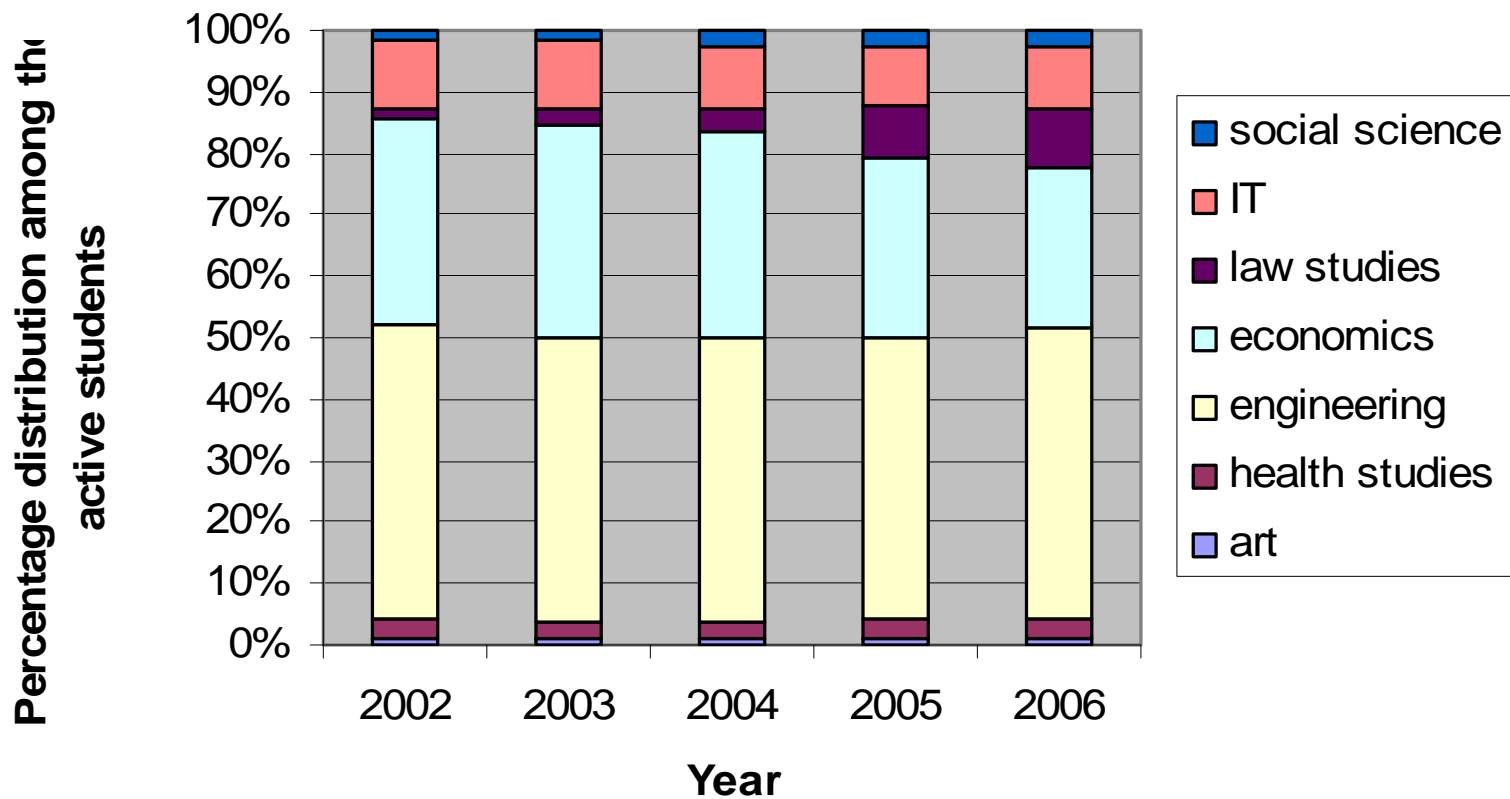


Students by classes

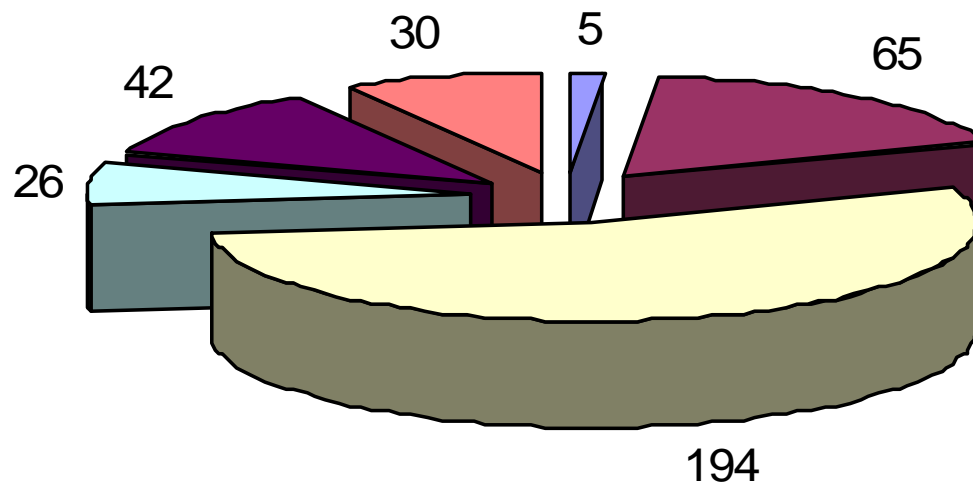








■ day-turn class ■ correspondence/remote class

Frequency of active students among the educational fields



Lecturers and researchers in the main structural units



- | | |
|---|--|
|  Research/Knowledge Centers |  Kautz Gyula Institute |
|  Faculty of Engineering Sciences |  Petz Lajos Institute |
|  Deák Ferenc Institute |  Varga Tibor Institute |

Monitoring

According to a survey:

31% has position at workplace at the time of the final exam

61% obtaining job within six months

71,5% is to settle in Győr region

16,3% wishes job at capital

85,3% thinks to choose the university again

Mission

Becoming regional knowledge center, serving the region and the country with its training, research and development supply

Taking part in the enrichment of Győr's cultural and scientific life

Developing constantly the network of researchers and lecturers

According to our quality developing program, we build an effectively and economically operating organization

Changes in the training structure 1.

In connection with starting the new type- training, the traditional training stopped

Msc training on the Faculty for Engineering – structure and schedule

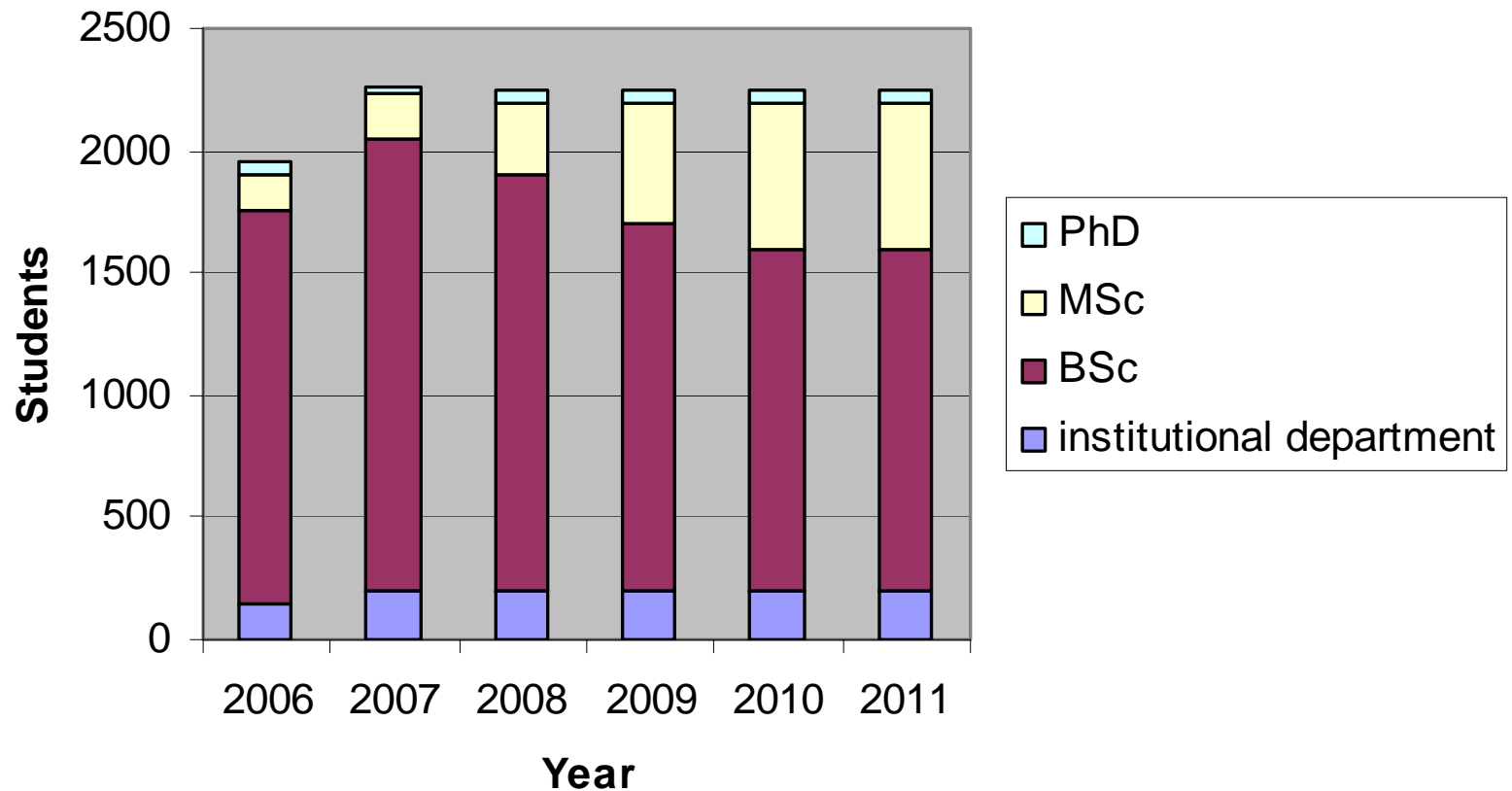
2007: Msc training in two subjects: mechanics engineer and engineer teacher

2008: Msc training in 5 further subjects

In the near future: 6 other subjects

Changes in the training structure 2.

Entering full-time students



Mobility and Accessibility 1.

Yearly 50-60 students abroad in the framework of Erasmus Programme

By 2008 this number will be between 80 and 100

Erasmus University Charter - supporting the student mobility with different means

2007: integration of Leonardo and Erasmus – contributes to the raising number of foreign travels and practices

Student's Scientific & Art Competition (TMDK)

Student successes on conferences of Science & Art

Applications on house conferences 200-250 / yr

Goal: yearly 300 works by 2011

Mobility and Accessibility 2.

Student's Associations:

We operate three colleges: **Baross Gábor S.A.** of Engineering, Kautz Gyula S.A of Economics, Batthyány Lajos S.A of Law

Opportunity to gain practical knowledge

Supplement of the education with additional research

Living at the college supports the continuity of study and research

Weekly and monthly programmes: lectures, conversations with specialists, public programmes

Preparing for the scientific activity and special professional knowledge

Postgraduation

Interdisciplinary Doctoral School of Engineering

Education from 2005, actually 36 full time students, three sciences: **civil engineering**, IT, transportation engineering

Other planned sciences: in two years – architectural engineering; in five years – mechatronical engineering, electric engineering, environmental engineering

Opportunities for Phd students

Possibility for becoming lecturers at the university

Employment at the academic and administrative departments, working for the Cooperative Research Center or for the Regional University Knowledge Center for Vehicle Industry

International relations

Students-, lecturers and educational exchange relations

Main financial resources: EU-sponsored SOCRATES ERASMUS and LEONARDO projects

Austria: Johannes Kepler Universiät Linz, Fachhochscule Technikum Kärnten, Fachhochscule des bfi Wien, Fh-Campus Wien

Bulgaria: Kolezh po Telekomunikatsii I poshti

Denmark: Ingeniorhojskolen Kobenhavn

France: Universite de Bourgogne, Université D'Evry, Université des Sciences et Technologies de Lille, Université de Rouen, École Supérieure d'Ingénieurs Généralistes

Irland: Dublin Institute of Technology

Finland: University of Helsinki, Savonia-Ammattikorkeakoulu, Oulun Seudun Ammattikorkeakoulu, Laurea Polytechnic

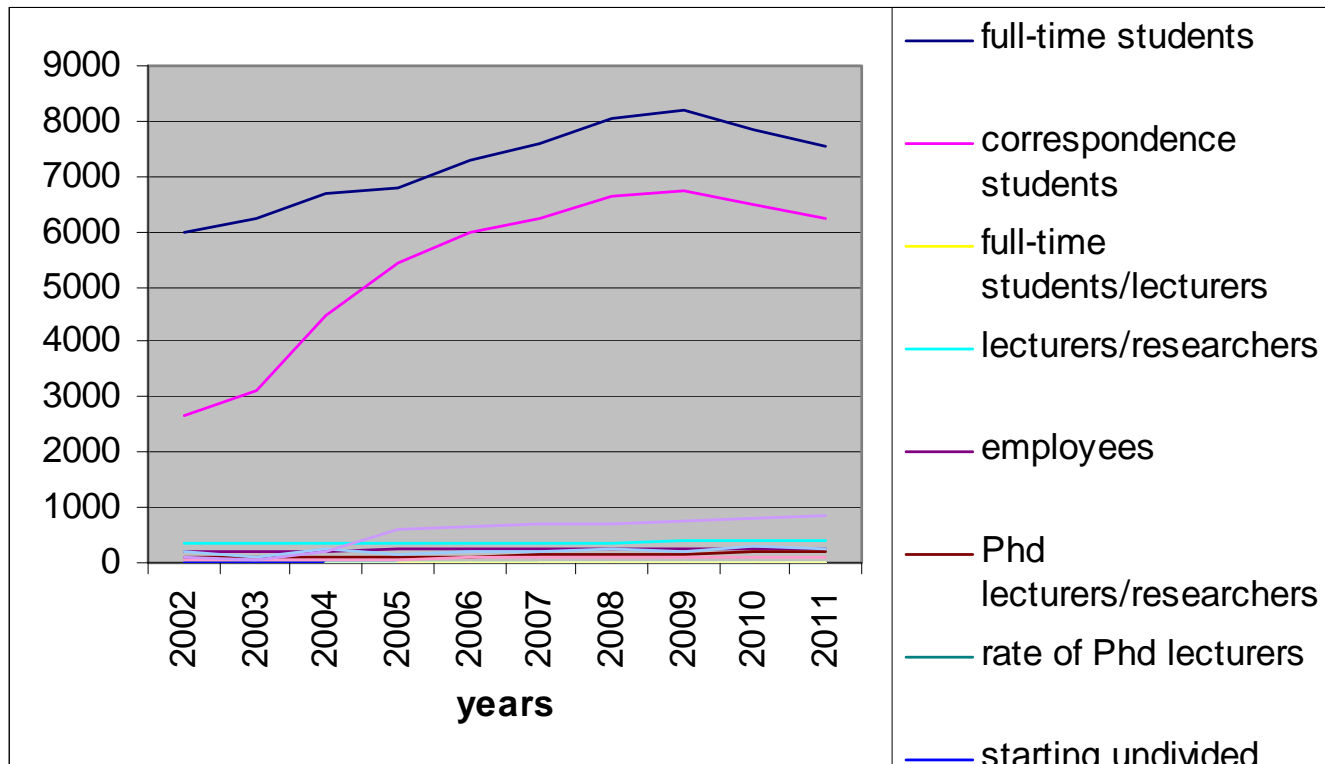
Greece: National Technical University of Athens, University of Patras

- Germany:** Fachhochschule Ansbach, Universität Bamberg, Technische Fachhochschule Berlin, Fachhochschule für Technik und Wirtschaft Berlin, Technische Universität Chemnitz, Fachhochschule Coburg, Fachhochschule Darmstadt, Technische Universität Dresden, Fachhochschule Erfurt, Fachhochschule Furtwangen Hochschule für Technik und Wirtschaft, Fachhochschule Ingolstadt, Fachhochschule Niederrhein, Universität Passau Fachhochschule Lausitz, Fachhochschule Albstadt-Sigmaringen, Katholische Fachhochschule NW, Deutsche Telekom Fachhochschule Leipzig,
- Netherlands:** Saxion Hogeschool IJsseland, Technische Universiteit Eindhoven, Noordelijke Hogeschool Leeuwarden, University of Utrecht
- Poland:** Uniwersytet Warszawski
- Romania:** Politehnica Universitatea Bucuresti, Technical University of Cluj - Napoca
- Slovakia:** Ekonomická fakulta Univerzity J. Selyeho v Komárne, Žilinská Univerzita v Žiline
- Italy:** Università degli Studi di Genova, Università Degli studi di L'Aquila, Università' Degli Studi Di Milano Bicocca, University of Pisa
- Spain:** Universidad Publica de Navarra, Universidad Politécnica de Valencia

Details of the institutional development 1.

	2002	2003	2004	2005	2006	2007	2008	2009	2010	2011
full-time students	6004	6227	6703	6801	7268	7594	8059	8177	7866	7551
correspondence students	2678	3106	4469	5417	5987	6256	6639	6736	6480	6220
full-time students/lecturers	18,4	18,8	19,3	19,2	20,1	20,6	21,4	21,3	20,1	18,9
lecturers/researchers	327	331	347	354	362	369	377	384	392	400
employees	222	222	223	228	234	236	239	241	244	246
Phd lecturers/researchers	80	91	98	104	115	130	145	160	180	200
rate of Phd lecturers	0,24	0,27	0,28	0,29	0,32	0,35	0,38	0,42	0,46	0,50
starting undivided classes	7	7	7	7	2	2	2	2	2	2
starting BSc-s			1	8	20	21	21	21	21	21
starting MSc-s						2	8	13	15	15
doctoral schools			1	2	2	2	3	4	4	4
vocational trainings				4	4	5	5	6	6	7
Scientific St.Ass. Works	207	118	239	156	218	180	260	220	300	260
R+D works	30	29	42	58	77	81	85	89	94	98
R+D income	96	63	180	618	650	683	717	752	790	830

Details of the institutional development 2.



Thank you for your attention!

www.uni.sze.hu